



AMENDMENT NO. 3 - JANUARY 1999
A PRELIMINARY SURVEY OF THE BOULDER ART IN THE
POWER STATION WADI, HATTA, DUBAI, STEPHEN A. GREEN

Amendment No. 3
To: Gary. Best wishes Steve Jan 99.

AMENDMENT NO. 3 – JANUARY 1999

A PRELIMINARY SURVEY OF THE BOULDER ART IN THE
POWER STATION WADI, HATTA, DUBAI, STEPHEN A. GREEN

CONTENTS

	PAGE NO.
SECTION A. NEW SITES FURTHER UP PSW NORTH GENERAL OVERVIEW	217- 222
SECTION B. NEW SITES (PSW 'NORTH')	223 . 248
(1) SACRIFICE WAY/PILGRIMS PROGRESS	224-228
(2) LONGHORN CATTLE	229-248
SECTION C. NEW SITES (PSW 'NORTH') CARVING ANALYSIS	249- 252

AMENDMENT NO. 3

SECTION A

NEW SITES FURTHER

UP PSW 'NORTH'


GENERAL OVERVIEW


SECTION A.


NEW SITES FURTHER UP PSW NORTH
GENERAL OVERVIEW

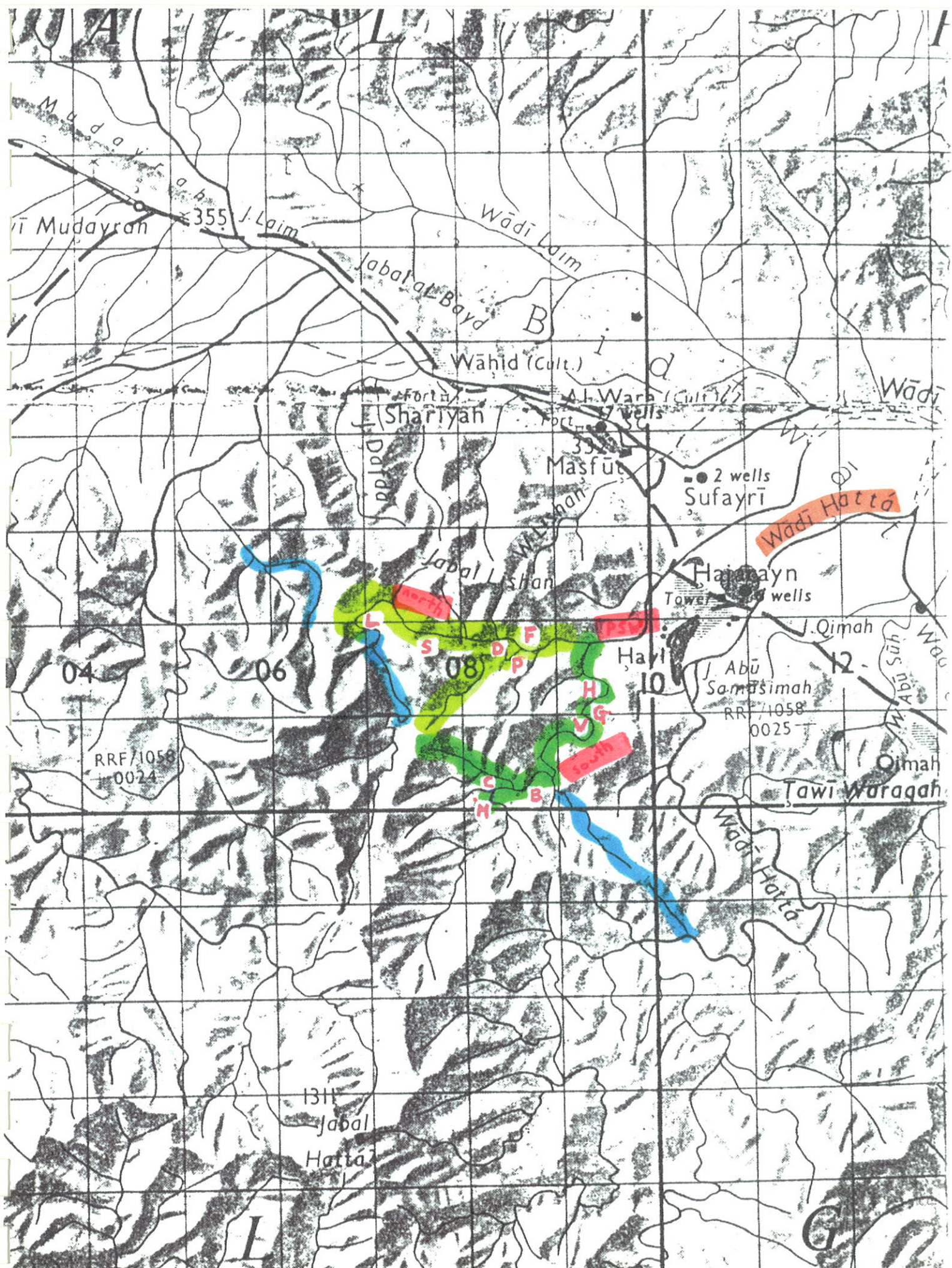
A map to show areas surveyed so far and the 11 sites now identified.

- PSW - Power Station Wadi
- PSW 'North' - Power Station Wadi Northern Tributary
- PSW 'South' - Power Station Wadi Southern Tributary (= 'Original' wadi)

- PSW 'South' - H = Hillfort
 - G = Graveyard
- V = Village
(Surveyed so far) - B = Border
- C = Cairn
- M = Mother Goddess

- PSW 'North' - P = Plate People
 - D = Donkey Rides
(Surveyed so far) - F = Foot
- S = Sacrifice Way/Pilgrims Progress
- L = Longhorn Cattle

-  - Priorities "TO DO"



SECTION A.

NEW SITES FURTHER UP PSW NORTH – GENERAL OVERVIEW

The PSW North from the area around sites F and D becomes extremely difficult to access and travel through at wadi level. There are a number of waterfalls and rock faces that are almost impossible to pass through on the wadi bottom. This forces you to back track and climb up to the terrace level or mountainside 2 to 4 times.

The terraces are normally quite short and quickly end by running into small gorges or mountains. Most of the terraces have well worn pathways and some of the mountainsides have clear tracks. However, many of the mountains have no obvious paths and are extremely steep and travel became too difficult/dangerous for Adam and I.

Fortunately we did meet a goatherd and his 20/30 goats, who after exchanging pleasantries and water smiled at Adam and I on our horizontal pathway and just walked straight up the side of one of these mountains – perhaps 80 to 100 metres straight up and over the crest, without any apparent effort or trouble. The local mountain dwellers obviously have much greater knowledge and confidence in traversing these mountainsides than we do and I imagine that access up stream is easy for those who know where and how to travel. For we city dwellers it remains difficult.

SECTION A.

GENERAL OVERVIEW – PSW ‘NORTH’

- TOP One of the almost impossible to cross wadi level waterfalls. These force you out of the wadi and up to the terrace level or mountainside.
- MIDDLE One of the easier wadi constrictions. The route is, however, cold and uncomfortable.
- BOTTOM An ‘easy’ mountainside pathway. This is relatively safe, rather obvious and on a gentle slope. However, if you slip or fall there is no stopping for @ 60 feet. It is not always this easy or obvious. The mountainsides are occasionally much steeper and very difficult. These become too difficult for us but appear to offer no problems for local mountain dwellers.



AMENDMENT NO. 3

SECTION B

NEW SITES

(PSW 'NORTH')

SECTION B - NEW SITES PSW 'NORTH'

1. SACRIFICE WAY/PILGRIMS PROGRESS

We did not voluntarily rise up to the terraces, as this usually required quite a difficult and almost vertical climb of between 40 to 80 foot. When we did climb out of the wadi bottom we reached a variety of ground cover; steep mountainsides, gently sloping slopes/scree and terraces. The terraces usually had well worn pathways. We did not really survey these small terraces as no buildings or structures were obvious. However, along the pathway we did find a few carvings.

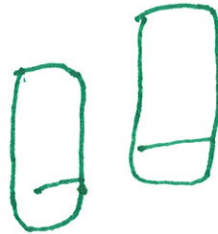
My son, Adam, believes that the pathway was some sort of Pilgrims way to the graves and altars further upstream and that Pilgrims would leave their marks for later travelers to see so that they would know they were on the right track.

SECTION B - NEW SITES PSW NORTH

1. SACRIFICE WAY/PILGRIMS PROGRESS

TOP 'PONY' rider
Notice; i) ground marker or wasum
 ii) extremely large, long, thick tail = PONY??
 iii) possible headdress of rider

MIDDLE Two well drawn feet (wasums??)



BOTTOM Hook shaped wasum,
 similar to scorpion tail,
 also letter/sound 'L' in both Lihyanite & Thamudic





SECTION B – NEW SITES PSW NORTH

1. SACRIFICE WAY/PILGRIMS PROGRESS

Enlargement of 'PONY' rider

Extremely long, thick, bushy tail = PONY?

Ground marker or wasum

Unusual 'V' shaped headdress

(this reminds me of the head adornments worn by the so called "Flower People" of South West Saudi Arabia)





SECTION B – NEW SITES

NEW SITES PSW NORTH

2. LONGHORN CATTLE

Situated on the inside of quite a large 'C' bend (perhaps 500 metres x 300 metres at the largest) and the associated large terrace. In places it is quite green and a number of trees are present. There are a few small stone circular structures, probable cairns, and there is also a possible 'altar' (?).

Unusual elements of the site; Many boulders are badly broken (is this natural? Or have they been vandalized ?).

One boulder has been used on all 4/5 faces.

There is one 'Altar' like structure (with carvings).

There are a number of large Bulls (Longhorn cattle).

Adam said the site 'felt' rather strange or important, rather like a religious building.

SECTION B - NEW SITES PSW NORTH

2. LONGHORN CATTLE (BULLS)

TOP Central portion of the site has trees and a few small stone structures.

MIDDLE Typical small structure.

BOTTOM Gorge edge, outer terrace. Adam standing next to the Horse 'Altar'.



SECTION B -- NEW SITES PSW NORTH

3. LONGHORN CATTLE

TOP

Wasum. Sectioned foot and ball??



MIDDLE

Wasum, Foot ?



BOTTOM

An extremely thin scratched in foot.
(Adam thinks perhaps a pilgrim to the 'shrine' site would place his sandalled foot on a boulder and draw around it, as a token of his visit).





SECTION B – NEW SITES PSW NORTH

2. LONGHORN CATTLE

TOP Wasum. Or script??

Lihyanite

Sa:



Sabaen

Sa:



MIDDLE

Wasum, square and line.



BOTTOM

Wasum, shape and line.





SECTION B – NEW SITES PSW NORTH

3. LONGHORN CATTLE

Three photos of the same 'unusual' boulder.

Unusual in the sense that all of the boulders faces have been decorated.

Unfortunately the surface is either weathering away or the boulder has been reused/damaged at some time and most of the carving cannot be discerned.



SECTION B – NEW SITES PSW NORTH

2. LONGHORN CATTLE

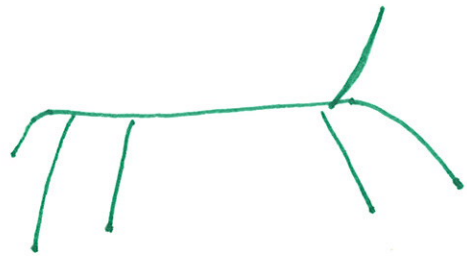
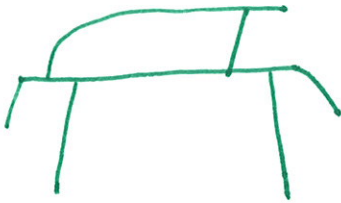
Three photos of the same horse 'altar'.

The upper photo shows the two large 'abraded/rubbed' boulders that were probably situated on top of the larger carved boulder. The two upper rubbed boulders 'shine' like a beacon and can be seen from @ 100 metres.

The right horse is rider less, with tail sticking up.

The left horse is reined and being ridden and the tail hangs down.

Could it be an altar where you go to pray to the success of catching horses/pony's/donkeys ??
i.e. before and after?





SECTION 8 - NEW SITES, PSW NORTH

2. - LONG HORN CATTLE

Contrary to my initial 'on-site' feeling that we had found depictions of the Auroch (*Bos primigenius*) a study of the photographs consider me to think otherwise. What I took to be extra horns are probably representations of humps. The horns also look too straight to be the Water Buffalo (*Bubalus bubalis*).

This leads me to identify our carvings with the 'humped' cattle. Apparently these were introduced from Baluchistan around 5000 years ago and replaced most of the humpless forms in the drier middle east within 1000 years (by @ 2000 BC).

To my eyes the cattle look like what I would expect an East African Masai warrior to be attending to.

I do not know if the UAE east coast/Omani fighting bulls have such long horns.

LONG HORN CATTLE 1

Large rounded body

Phallus



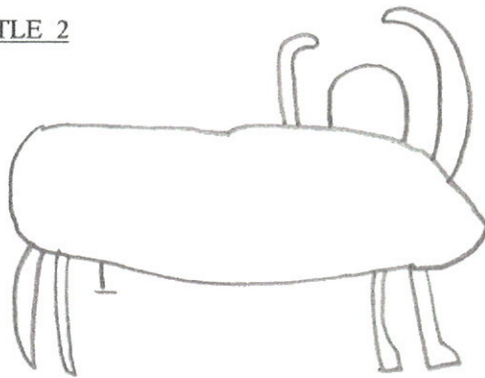
Long straight horns

Large head.
Jaw?

LONG HORN CATTLE 2

Large body.

Phallus?



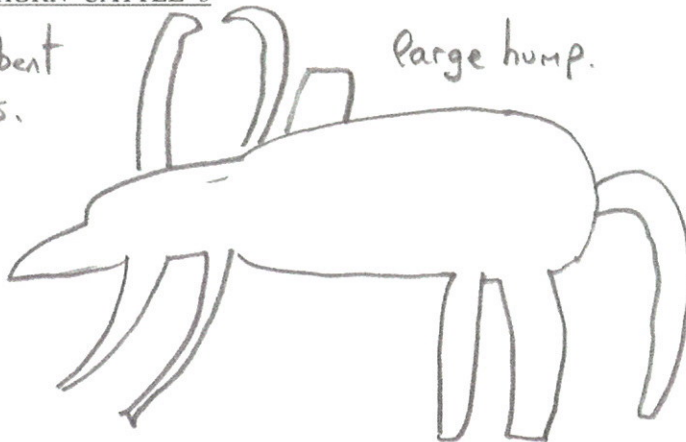
Long horns, bent at end
+ hump?

LONG HORN CATTLE 3

Longhorns, bent at ends.

Large hump.

Pointed head



Large tail

Gary, do you have any photo's of the fighting bulls? Any good references to Indian or

SECTION B -- NEW SITES PSW NORTH

2. LONGHORN CATTLE

LONGHORN CATTLE NO.1

Without handler.
Unclear, poor quality.



242

SECTION B - NEW SITES PSW NORTH

2 LONGHORN CATTLE

LONGHORN CATTLE NO. 2

With handler,
Rope seems to be tied to handlers leg.
The stone is breaking up and needs preserving.



244

SECTION B – NEW SITES PSW NORTH

3. LONGHORN CATTLE

LONGHORN CATTLE NO. 3

Adam and I found the boulder badly broken up and scattered around. Like a heavy jigsaw we managed to reassemble it. It badly needs preserving.

It has a man handler, who is holding a rope.

Note the very unusual double waist projections above the hips of the man. They do not cover his privates so it is doubtful if they are pantaloons. Could they be some sort of stomach protection to stop him from being gored?

Also note the small bullock to the left.



246

SECTION B - NEW SITES PSW NORTH

4. LONGHORN CATTLE

LONGHORN CATTLE NO. 3

Close up of male cowherd, showing genitals, rope, small bullock,
and especially the unusual double waist projections.





4070 HILLMAN CAMP
225 914 414 40 27
HILLMAN CAMP

248

AMENDMENT NO. 3

SECTION C

NEW SITES

PSW NORTH

CARVINGS ANALYSIS

AMENDMENT NO. 3

SECTION C

NEW SITES PSW NORTH – CARVINGS ANALYSIS

Items of especial interest;

- Headdress of pony rider.
- Large tailed equine (pony?).
- The FOOT wasum continues upstream.
- The multi faced boulder.
- Large, long horned, humped bulls/cattle (East African Zebu or Omani fighting bulls?).
- Unusual double waist projection of cowherd.
- Broken and crumbling boulders (older, destroyed, or just bad quality?).
- No W or M wasums.
- No circles.

The Longhorn Cattle site once again possesses vague similarities to other areas but it also shows its own individuality and uniqueness (as per other major sites in the PSW).

We find the FOOT mark continuing along PSW NORTH, but the M & W wasum within the PSW SOUTH, there is no real continuity or commonality (except the equines and riders – although even here certain different elements stand out, further analysis is required).

After reviewing this Amendment my wife asked two questions that I repeat (as I could not answer them).

- (i) If the carvings are only 200 to 500 years old then the inhabitants would have been Moslem. How do you reconcile the Islamic teachings with;
 - pictures of humans?
 - pictures of genitals?

- (ii) Whatever period we are talking about did everybody walk around in the nude? (where are peoples clothes?).

SECTION C -- NEW SITES PSW NORTH

CARVINGS ANALYSIS

A= ANIMAL W= WASUM X= NO IDEA O= OBJECT P= PERSON R= WRITING
 &= JOINED TOGETHER ?= BEST GUESS

SACRIFICE WAY/PILGRIMS PROGRESS

NO.	type	desc 1	desc2	desc3
1	PA	PONY & RIDER	GROUND?	
2	W	FOOT	OR WASUM?	
3	W	L	FOOT	

LONGHORN CATTLE

NO.	type	desc 1	desc2	desc3	
1	W	SECTIONED FOOT	& BALL?		
2	W	FOOT			
3	W	FOOT			
4	W	'Sa'			
5	W	SQUARE	LINE		
6	W	SHAPE	LINE		
7	X	X	X	X	+ @ 5 MORE??
Numerous carvings, unfortunately worn/damaged					
8	AP	HORSE	HORSE & RIDER		
9	A	BULL			
10	AP	BULL	MAN		
11	AP	BULL	MAN	BULLOCK	

SECTION C

NEW SITES – PSW NORTH

CARVINGS ANALYSIS

BOULDERS	NO OFF CARVINGS	APPROX TOTAL CARVINGS
4	x 1	4
8	x 2	16
1	x 3	3
1	x @ 8 (estimate)	8
—		—
14		31

For the first time multiple carvings clearly predominate, especially x2.

Does this indicate a more complex or fractures society?

Does it indicate an inferior society?

A	P	W	O	X	R
7	4	12	0	@8 on 1 boulder	0

There is no writing, and no man made objects (other than rope).

Domesticated animals predominate, especially large long horned bulls and equines (no camels, goats, sheep or chickens etc., why??).

Wasum or wasum type carvings again predominate with the foot shape taking over (and the line second).